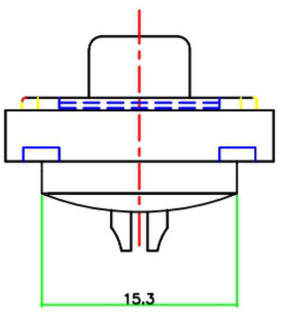
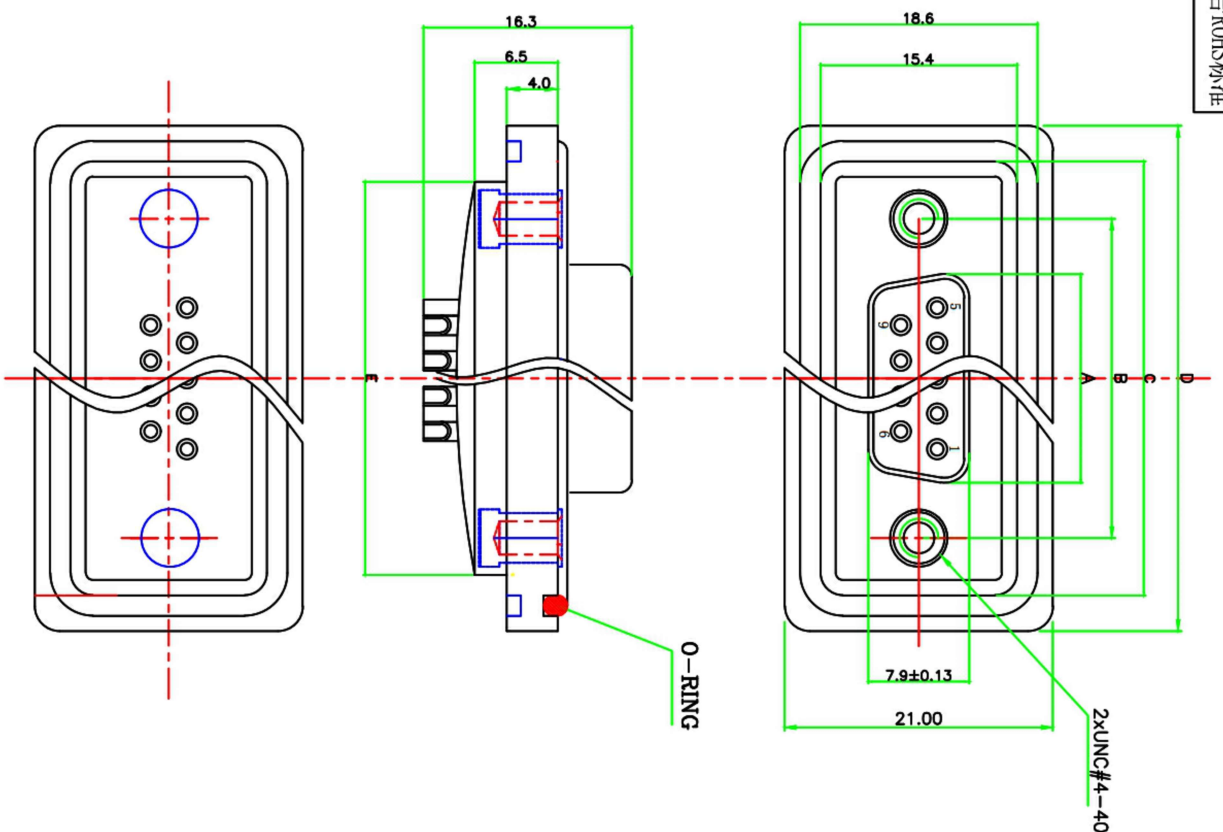


标“*”为重点检验尺寸
所用物料均符合ROHS标准



P.0(XXX)	No. of Contact	A ±0.25	B ±0.13	C ±0.25	D ±0.38	E ±0.25
009	9	16.33	24.99	33.98	39.58	33.98
015	15	24.66	33.32	42.30	47.90	42.30
025	25	38.38	47.04	56.02	61.62	55.92
037	37	54.84	63.50	72.48	78.08	72.48

MATERIALS AND FINISH

SHELL : STEEL,TIN FINISHED
 INSULATOR : PBT UL94V-0 BLACK COLOR
 SIGNAL CONTACT: COPPER ALLOY,GOLD PLATED
 WATERTIGHT FRAME: PBT UL94-0 BLACK COLOR
 O-RING : SILICONE
 EPOXY SEALANT: EPOXY

ELECTRICAL CHARACTERISTICS

SIGNAL CONTACT CURRENT RATING 5.0 AMPS
 SIGNAL CONTACT RESISTANCE 10mΩ MAX
 DIELECTRIC WITHSTANDING VOLTAGE: 1000 V AC MIN.
 INSULATION RESISTANCE : 5GΩ MIN.
 TEMPERATURE RATING : -55°C ~ +105°C
 DEGREE OF PROTECTION: IP67 ACCORD



深圳市敏锐连接器有限公司
 Shenzhen Rigoal Connector Co.,Ltd

TOLERANCE: XX ±0.30 XXX ±0.10 X.XXX ±0.05 X° ±5° XX° ±2°	DRAWN BY :	PART NAME: D-SUB-9-F-SD
CHECKED BY:	DATE :	DRAW NO.:
APPROVED BY:	DATE :	PART NO.:
UNIT: mm [inch] SCALE:1:1 SIZE: A4	REMARK	MOLD NO.