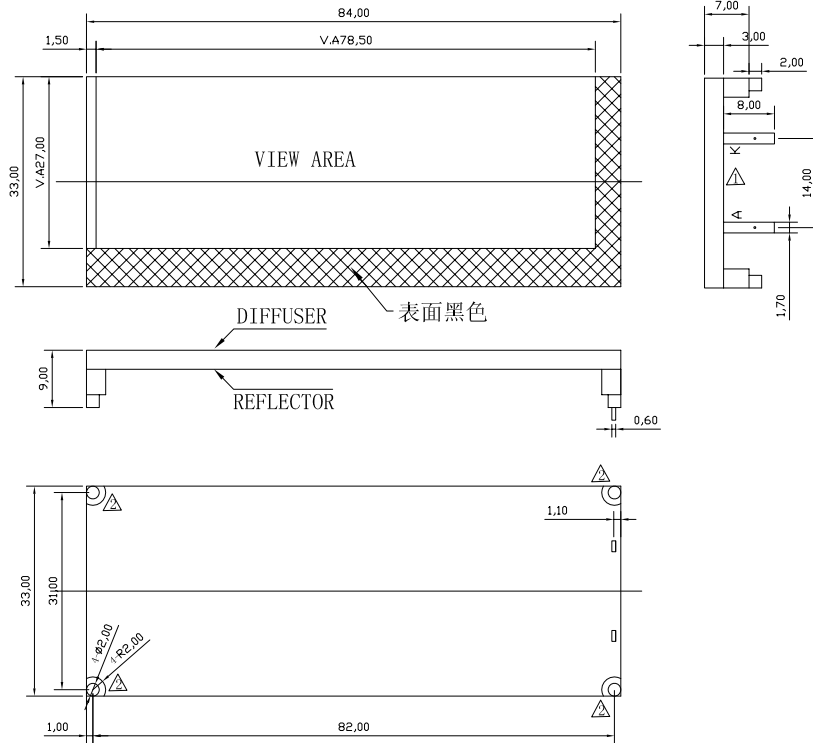
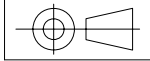


1. 结构尺寸 MECHANICAL OUTLINE

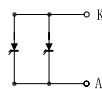
COLOR : BLUE

(未注尺寸公差 Unspecified Tolerances is: ± 0.3) 颜色 : 蓝色

UNIT: mm



2. 电路图 CIRCUIT DIAGRAM (LED 1*2=2 die)



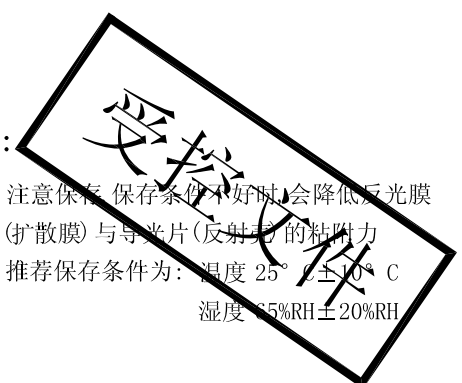
NOTE:

1. () : REFERENCE DIMENSION.
2. ∇ : SPECIAL CHARACTERISTIC.

3. 保存和焊接条件 STORAGE & SOLDERING CONDITIONS:

- Store with care. Storing the units in bad condition will cause the reflector sheet and decrease its adhesive power. Storage The products under the condition: temperature ($25^{\circ}\text{C} \pm 10^{\circ}\text{C}$) and humidity ($65\%RH \pm 20\%RH$) our recommendation.

- 注意保存 保存条件不好时,会降低反光膜(扩散膜)与导光片(反射片)的粘附力
 推荐保存条件为: 温度 $25^{\circ}\text{C} \pm 10^{\circ}\text{C}$
 湿度 $65\%RH \pm 20\%RH$



ISSUE 标识	AMENDMENT 改正内容	Date: 日期	ISSUE 标识	AMENDMENT 改正内容	Date: 日期	DESIGN: 设计 张小安 11.07.14
∇	更改灯的颜色	11.04.6				CHECKED: 检查
∇	增加4个柱子	11.07.5	Drawing No: 图号:	MUL-1449.01	REV: 版本	C APPROVED: 批准

- The Soldering Temperature is $260\pm 5^{\circ}\text{C}$ and Soldering Time should be less than 3 sec, and soldering iron power should be less than 30W.
- The soldering point should be farther than 1.6mm from body .
- 焊接温度 $260^{\circ}\text{C}\pm 5^{\circ}\text{C}$, 焊接时间小于 3 秒, 烙铁功率小于 30W.
- 焊接点应离产品实体大于 1.6 mm .

4. 极限参数 ABSOLUTE MAXIMUM RATINGS

(除非特别说明, 环境温度 $T_a=25^{\circ}\text{C}$. Unless specified, The Ambient temperature $T_a=25^{\circ}\text{C}$)

项目 Item	符号 Symbol	条件 Conditions	值 Rating	单位 Unit
* 极限直流正向电流 Absolute maximum forward current	Ifm		50	mA
* 脉冲驱动时极限正向电流 Peak forward current	Ifp	1 msec 脉冲, 1/10 占空比 1 msec Plus 10% Duty Cycle	120	mA
反向电压 Reverse Voltage	Vr		5	V
* 极限功耗 Power dissipation	Pd		150	mW
工作温度 Operating Temperature Range	Topr		$-30\sim+70$	$^{\circ}\text{C}$
贮存温度 Storage Temperature Range	Tstg		$-40\sim+80$	$^{\circ}\text{C}$

5. The lifetime(50% decreasing brightness) is about 50000 hours.
About 10% decarasing of Luminary flux at $+70\sim+85^{\circ}\text{C}$.

6. 电 .光特性 ELECTRICAL-OPTICAL CHARACTERISTICS

(除非特别说明, 环境温度 $T_a=25^{\circ}\text{C}$. Unless specified, The Ambient temperature $T_a=25^{\circ}\text{C}$)

项目 Item	符号 Symbol	最小值 min.	典型值 typ.	最大值 max.	单位 Unit	测定条件 Condition
正向电压 Forward Voitage	Vf	3.0	3.2	3.4	V	If= 30 mA
反向电流 Reverse Current	Ir				μA	Vr= 5 V
主波长 Dominant wave length	λD	465		470	nm	If= 30 mA
频谱半宽度 Spectral Line Half width	$\Delta\lambda$		25		nm	If= 30 mA
* 亮度 Luminance	Lv		19		cd/m^2	If= 30 mA

* 亮度值是 5 个测量点的平均值, 亮度最小值比最大值一般大于 75%

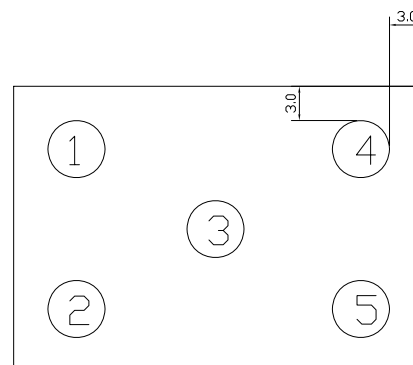
使用 BM-7 亮度色度仪测量, 测量光圈 $\varnothing 5\text{ mm}$.

The luminance is the average value of 5 points, and

The $L_{\text{min.}}/L_{\text{max.}}$ is more than 75% Typical

The measurement instrument is BM-7 luminance

Colorimeter. The aperture is $\varnothing 5\text{ mm}$.



Drawing No:	MUL-1449.01	REV:	C
图号:	MUL-1449.01	版本	C