

Standard Rectifier Module

$$V_{RRM} = 2 \times 1600 \text{ V}$$

$$I_{FAV} = 224 \text{ A}$$

$$V_F = 1,07 \text{ V}$$


Phase leg

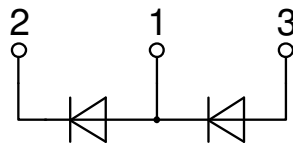
Part number

MDD200-16N1



Backside: isolated

 E72873



Features / Advantages:

- Planar passivated chips
- Very low leakage current
- Very low forward voltage drop
- Improved thermal behaviour

Applications:

- Diode for main rectification
- For single and three phase bridge configurations
- Supplies for DC power equipment
- Input rectifiers for PWM inverter
- Battery DC power supplies
- Field supply for DC motors

Package: Y4

- Isolation Voltage: 3600 V~
- Industry standard outline
- RoHS compliant
- Base plate: Copper internally DCB isolated
- Advanced power cycling

Terms Conditions of usage:

The data contained in this product data sheet is exclusively intended for technically trained staff. The user will have to evaluate the suitability of the product for the intended application and the completeness of the product data with respect to his application. The specifications of our components may not be considered as an assurance of component characteristics. The information in the valid application- and assembly notes must be considered. Should you require product information in excess of the data given in this product data sheet or which concerns the specific application of your product, please contact the sales office, which is responsible for you.

Due to technical requirements our product may contain dangerous substances. For information on the types in question please contact the sales office, which is responsible for you.

Should you intend to use the product in aviation, in health or life endangering or life support applications, please notify. For any such application we urgently recommend

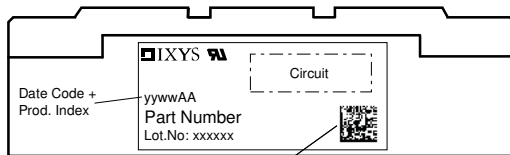
- to perform joint risk and quality assessments;

- the conclusion of quality agreements;

- to establish joint measures of an ongoing product survey, and that we may make delivery dependent on the realization of any such measures.

Rectifier				Ratings			
Symbol	Definition	Conditions		min.	typ.	max.	Unit
V_{RSM}	max. non-repetitive reverse blocking voltage			$T_{VJ} = 25^{\circ}C$		1700	V
V_{RRM}	max. repetitive reverse blocking voltage			$T_{VJ} = 25^{\circ}C$		1600	V
I_R	reverse current	$V_R = 1600$ V		$T_{VJ} = 25^{\circ}C$		1	mA
		$V_R = 1600$ V		$T_{VJ} = 150^{\circ}C$		20	mA
V_F	forward voltage drop	$I_F = 300$ A		$T_{VJ} = 25^{\circ}C$		1,16	V
		$I_F = 600$ A				1,39	V
		$I_F = 300$ A		$T_{VJ} = 125^{\circ}C$		1,07	V
		$I_F = 600$ A				1,36	V
I_{FAV}	average forward current	$T_C = 100^{\circ}C$		$T_{VJ} = 150^{\circ}C$		224	A
$I_{F(RMS)}$	RMS forward current	180° sine	d = 0.5			350	A
V_{F0}	threshold voltage	} for power loss calculation only		$T_{VJ} = 150^{\circ}C$		0,80	V
r_F	slope resistance					0,6	mΩ
R_{thJC}	thermal resistance junction to case					0,13	K/W
R_{thCH}	thermal resistance case to heatsink				0,08		K/W
P_{tot}	total power dissipation			$T_C = 25^{\circ}C$		960	W
I_{FSM}	max. forward surge current	t = 10 ms; (50 Hz), sine		$T_{VJ} = 45^{\circ}C$		10,5	kA
		t = 8,3 ms; (60 Hz), sine		$V_R = 0$ V		11,3	kA
		t = 10 ms; (50 Hz), sine		$T_{VJ} = 150^{\circ}C$		8,93	kA
		t = 8,3 ms; (60 Hz), sine		$V_R = 0$ V		9,64	kA
I^2t	value for fusing	t = 10 ms; (50 Hz), sine		$T_{VJ} = 45^{\circ}C$		551,3	kA ² s
		t = 8,3 ms; (60 Hz), sine		$V_R = 0$ V		535,0	kA ² s
		t = 10 ms; (50 Hz), sine		$T_{VJ} = 150^{\circ}C$		398,3	kA ² s
		t = 8,3 ms; (60 Hz), sine		$V_R = 0$ V		386,6	kA ² s
C_J	junction capacitance	$V_R = 1100$ V; f = 1 MHz		$T_{VJ} = 25^{\circ}C$	230		pF

Package Y4				Ratings		
Symbol	Definition	Conditions	min.	typ.	max.	Unit
I_{RMS}	RMS current	per terminal			300	A
T_{VJ}	virtual junction temperature		-40		150	°C
T_{op}	operation temperature		-40		125	°C
T_{stg}	storage temperature		-40		125	°C
Weight				150		g
M_D	mounting torque		2,25		2,75	Nm
M_T	terminal torque		4,5		5,5	Nm
$d_{Spp/App}$	creepage distance on surface striking distance through air	terminal to terminal	14,0	10,0		mm
$d_{Spb/Apb}$		terminal to backside	16,0	16,0		mm
V_{ISOL}	isolation voltage	t = 1 second			3600	V
		t = 1 minute	50/60 Hz, RMS; $I_{ISOL} \leq 1$ mA		3000	V



Data Matrix: Typ (1-19), DC+Prod.Index (20-25), FKT# (26-31)
leer (33), lfd.# (33-36)

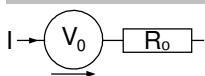
Ordering	Ordering Number	Marking on Product	Delivery Mode	Quantity	Code No.
Standard	MDD200-16N1	MDD200-16N1	Box	6	500212

Similar Part	Package	Voltage class
MDD142-16N1	Y4-M6	1600
MDD172-16N1	Y4-M6	1600

Equivalent Circuits for Simulation

* on die level

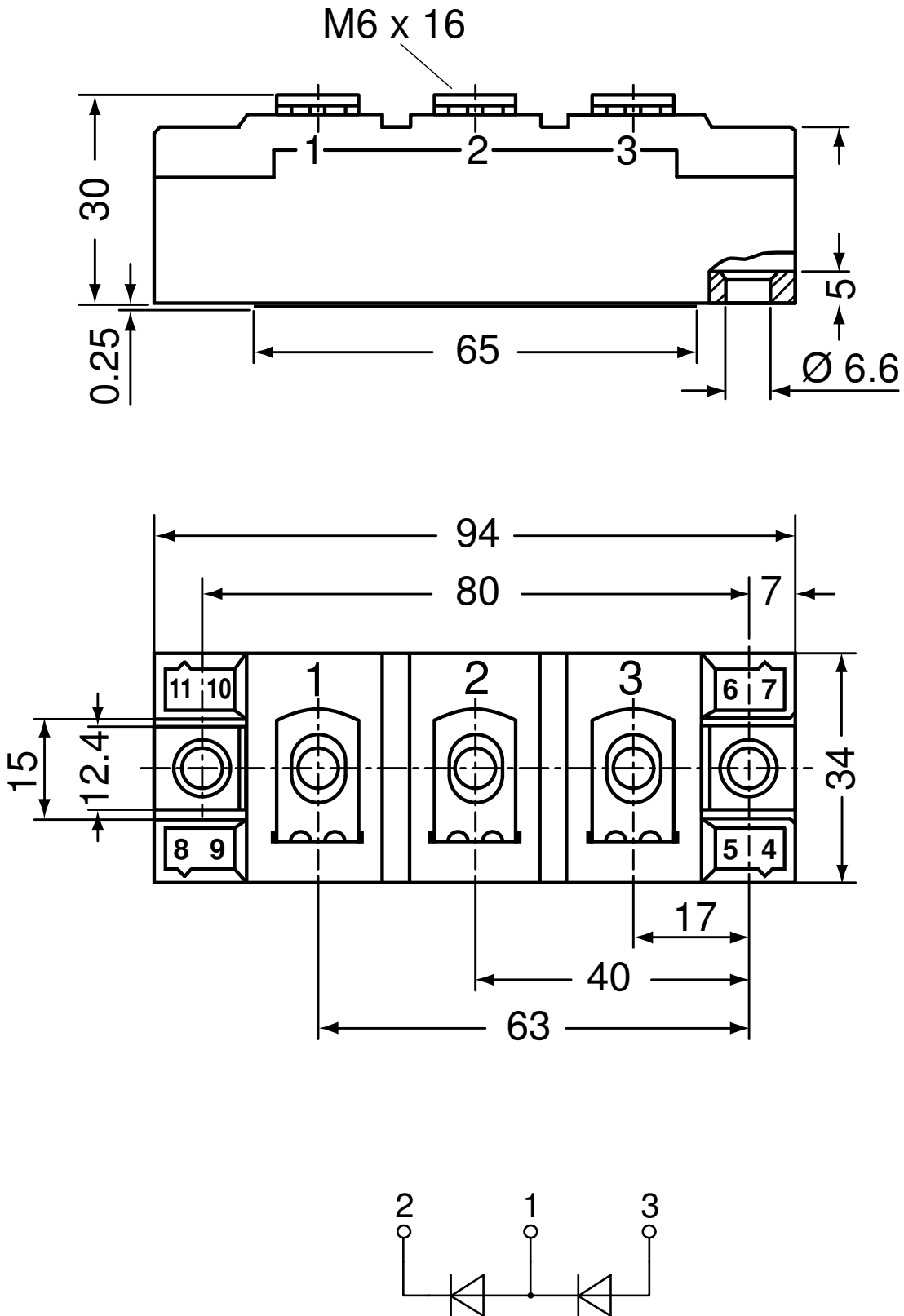
$T_{VJ} = 150$ °C



Rectifier

$V_{0 \max}$	threshold voltage	0,8	V
$R_{0 \max}$	slope resistance *	0,4	mΩ

Outlines Y4



Rectifier

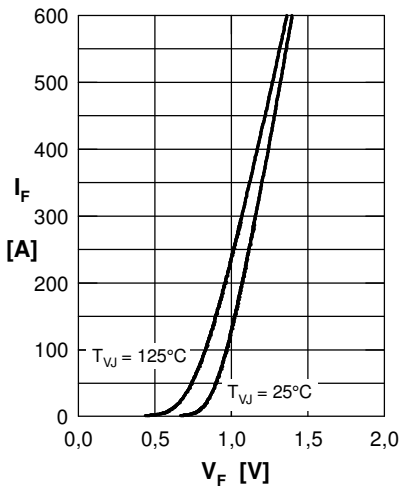


Fig. 1 Forward current versus voltage drop

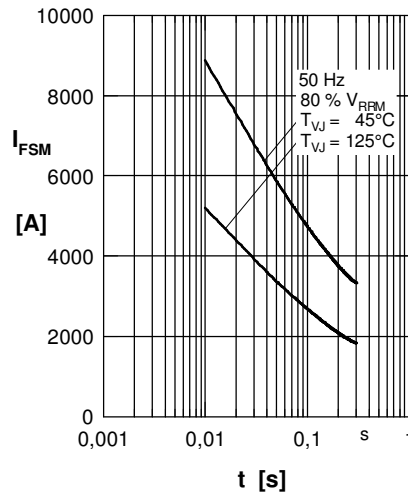


Fig. 2 Surge overload current
I_{FSM}: Crest value, t: duration

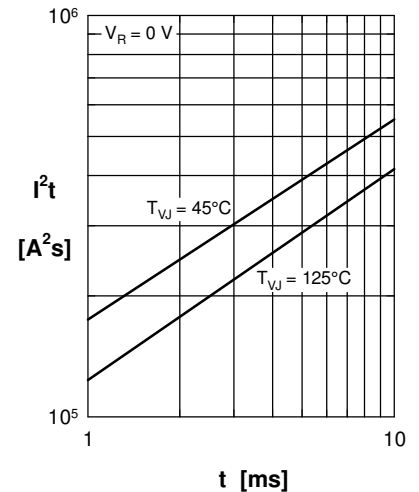


Fig. 3 I²t versus time (1-10 ms)

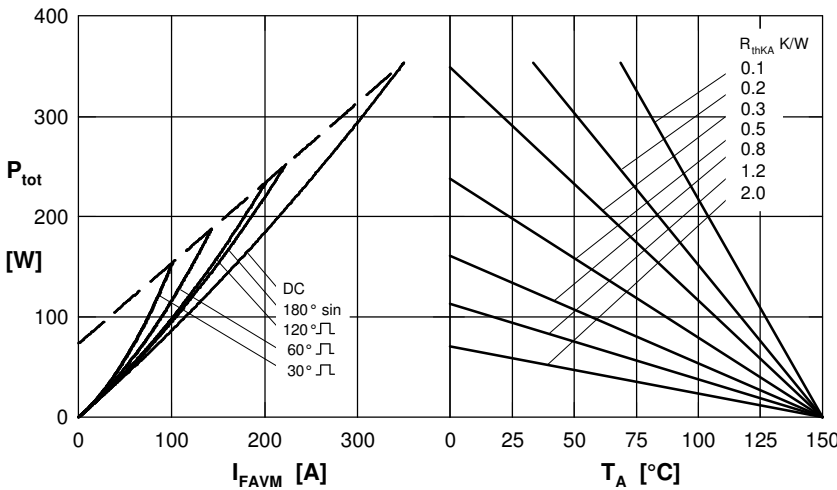


Fig.4 Power dissipation versus forward current and ambient temperature (per diode)

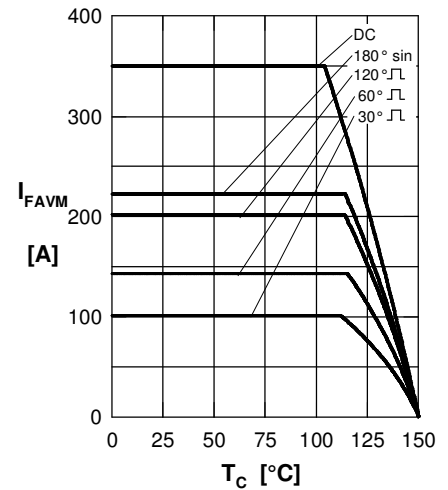


Fig. 5 Maximum forward current at case temperature

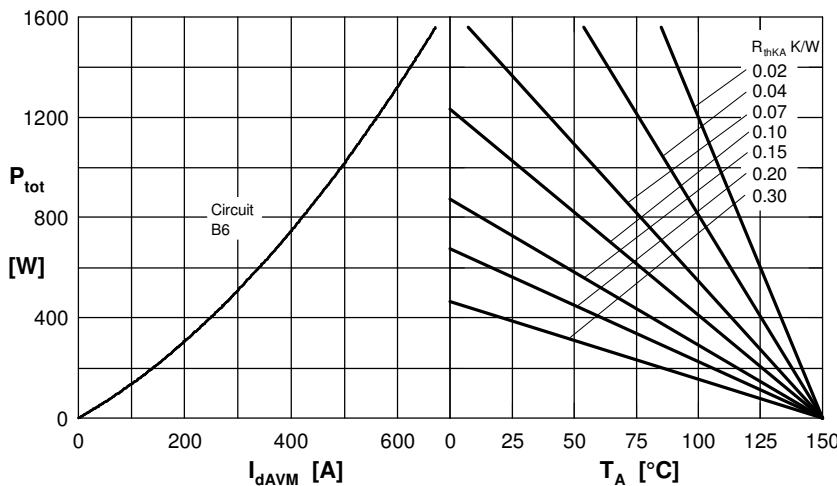


Fig.6 Three phase rectifier bridge: Power dissipation versus direct output current and ambient temperature

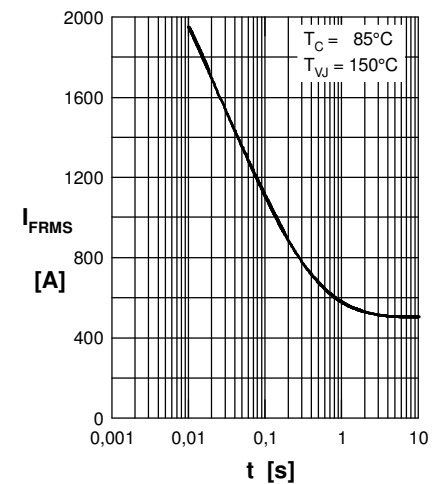
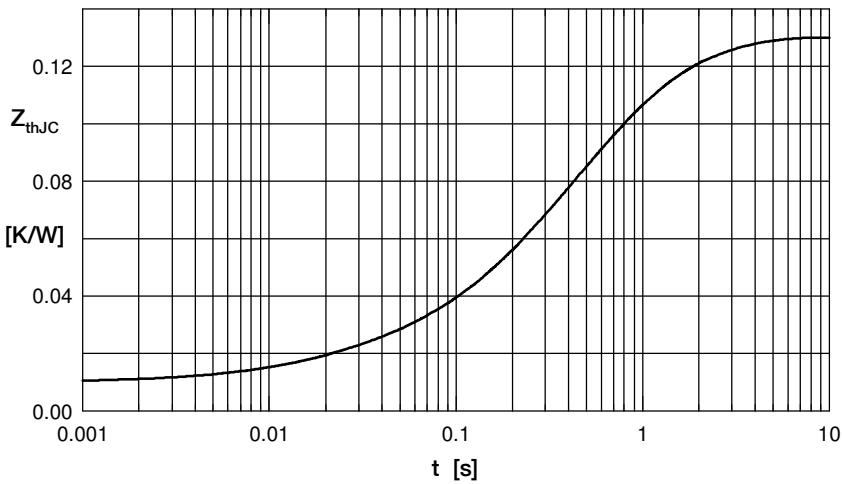


Fig. 7 Rated RMS current versus time (360° conduction)



Constants for Z_{thJC} calculation:

i	R_{thi} [K/W]	t_i [s]
1	0.0100	0.00014
2	0.0065	0.019
3	0.0250	0.180
4	0.0615	0.520
5	0.0270	1.600

Fig. 8 Transient thermal impedance junction to case