

# HP10J 1000V DC Class J Photovoltaic Fuses

## The industry's most efficient 1000VDC fuses

Mersen's HP10J photovoltaic (PV) fuse series was engineered and designed specifically for the protection of photovoltaic systems. Its enhanced fuse construction makes it ideal for continuous temperature and current cycling withstand adding to system longevity. The 1000VDC rated HP10J designed for low minimum breaking capacity capabilities of 1.35 times the fuse rated current value, allows for safe circuit interruption under typical low fault current conditions produced by PV arrays. Protect your off-grid or grid tied PV system from unexpected ground faults and line faults using Mersen's HelioProtection® fuse line.

### Features/Benefits:

- UL Listed to standard 2579 – Photovoltaic Fuses
- Smallest available footprint in the industry
- Enlarged mounting holes
- Low fault current interrupting capability
- Durable construction for enhanced system longevity
- Temperature cycle withstand capability
- Guaranteed operation at temperature extremes
- Blown fuse indicator options available (EI option)
- 200A to 400A available in NH3 mounting

### Applications:

- Re-combiner box (sub-combiner, array combiner, master combiner) applications
- Inverter DC input
- Battery charge controllers

## Catalog Numbers (amps)

Frame Size 1	Frame Size 2	Frame Size 3
HP10J70	HP10J250	HP10J450
HP10J80	HP10J300	HP10J500
HP10J100	HP10J350	HP10J600
HP10J125	HP10J400	
HP10J160		
HP10J200		

For NH3 mounting on 200A to 400A, add suffix "XL" to catalog number (ex. HP10J400XL). 200A part number is HP10J200/400XL.

For mechanical blown fuse indication, add suffix "EI" to the catalog number (ex. HP10J200EI).

When using the EI Indicator, if remote blown fuse signal is desired, select AOS-Q (quick connect terminal) or AOS-S (screw terminal).

Mersen AOS (Add-on switches) contain one single-pole double-throw (NO-NC) contact rated 4 amperes resistive and 1 ampere inductive at 250VAC maximum.



### Ratings:

- Volts** : 1000VDC (70A to 600A)  
: 600VAC (70A to 400A)
- Amps** : 70A to 600A
- IR** : 65kA @ 1000VDC  
: 200kA @ 600VAC
- MBC** : 1.35 x In  
Photovoltaic Fuse

### Approvals:

- UL listed to Standard 2579 File E333668 (70A to 600A)
- UL listed to Standard 248 File E2137 (70A to 400A)
- CSA Component Certified C22.2 (70A to 400A)



# HP10J 1000V DC Class J Photovoltaic Fuses

## Class J PV Fuse, 1000VDC, 65kA IR DC, Frame Size 1



Catalog Number	Reference Number	Rated Current $I_n$ (Amps)	Power Dissipation at $0.7xI_n$ (Watts)	Power Dissipation at $0.8xI_n$ (Watts)	Power Dissipation at $1.0xI_n$ (Watts)	Package
HP10J70	Z1040749	70	3	5	10	1
HP10J80	A1040750	80	4	5	10	1
HP10J100	B1040751	100	6	7	15	1
HP10J125	C1040752	125	5	7	14	1
HP10J160	D1040753	160	6	8	16	1
HP10J200	E1040754	200	10	15	27	1

## Class J PV Fuse, 1000VDC, 65kA IR DC, Frame Size 2



Catalog Number	Reference Number	Rated Current $I_n$ (Amps)	Power Dissipation at $0.7xI_n$ (Watts)	Power Dissipation at $0.8xI_n$ (Watts)	Power Dissipation at $1.0xI_n$ (Watts)	Package
HP10J250	F1040755	250	13	18	34	1
HP10J300	G1040756	300	16	22	37	1
HP10J350	H1040757	350	17	24	45	1
HP10J400	J1040758	400	19	27	52	1

## Class J PV Fuse, 1000VDC, 65kA IR DC, Frame Size 3



Catalog Number	Reference Number	Rated Current $I_n$ (Amps)	Power Dissipation at $0.7xI_n$ (Watts)	Power Dissipation at $0.8xI_n$ (Watts)	Power Dissipation at $1.0xI_n$ (Watts)	Package
HP10J450	K1040759	450	22	27	56	1
HP10J500	K1047107	500	22	31	58	1
HP10J600	L1047108	600	30	43	82	1

## Fuse Blocks for Class J PV Fuse, Frame Size 1, 1-Pole, 1000VDC, 100kA SCCR



Catalog Number	Reference Number	Rated Current $I_n$ (Amps)	Terminal Configuration	Wire Range	Wire Insulation Rating	Package
62001HPJ	S1037385	200	Box-Box	350kcmil - #6	90°C	1
62041HPJ	Q1043961	200	Box-Stud	350kcmil - #6	90°C	1
62011HPJ	Q1033680	200	Stud-Stud	350kcmil - #6	90°C	1

## Fuse Blocks for Class J PV Fuse, Frame Size 2, 1-Pole, 1000VDC, 100kA SCCR



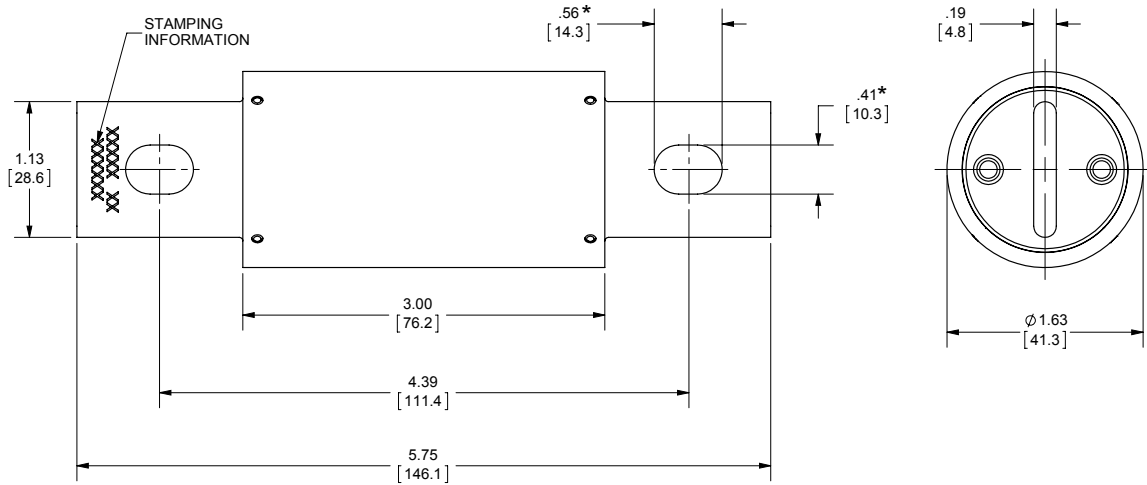
Catalog Number	Reference Number	Rated Current $I_n$ (Amps)	Terminal Configuration	Wire Range	Wire Insulation Rating	Package
64031HPJ	T1037386	400	Box-Box	(2) 350kcmil - #6	90°C	1
64041HPJ	R1043962	400	Box-Stud	(2) 350kcmil - #6	90°C	1
64011HPJ	S1043963	400	Stud-Stud	(2) 350kcmil - #6	90°C	1

## Fuse Blocks for Class J PV Fuse, Frame Size 3, 1-Pole, 1000VDC, 100kA SCCR

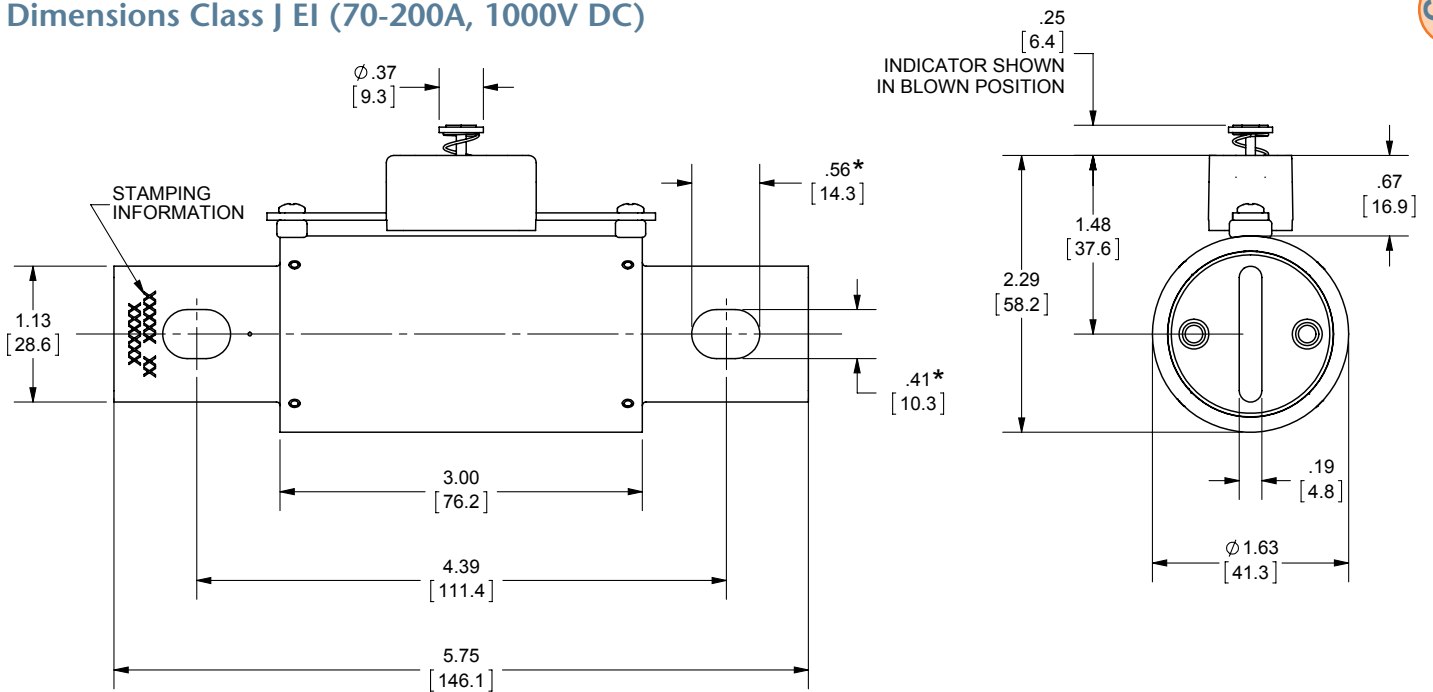
Catalog Number	Reference Number	Rated Current $I_n$ (Amps)	Terminal Configuration	Wire Range	Wire Insulation Rating	Package
6631HPJ		600	Box-Box	(2) 350kcmil - #6	90°C	1
6641HPJ		600	Box-Stud	(2) 350kcmil - #6	90°C	1
6611HPJ		600	Stud-Stud	(2) 350kcmil - #6	90°C	1

# HP10J 1000V DC Class J Photovoltaic Fuses

## Dimensions Class J (70-200A, 1000V DC)



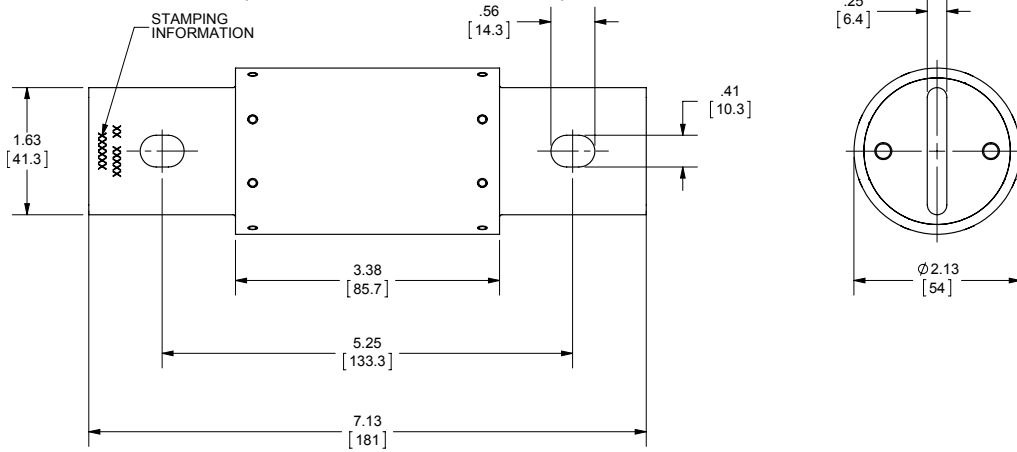
## Dimensions Class J EI (70-200A, 1000V DC)



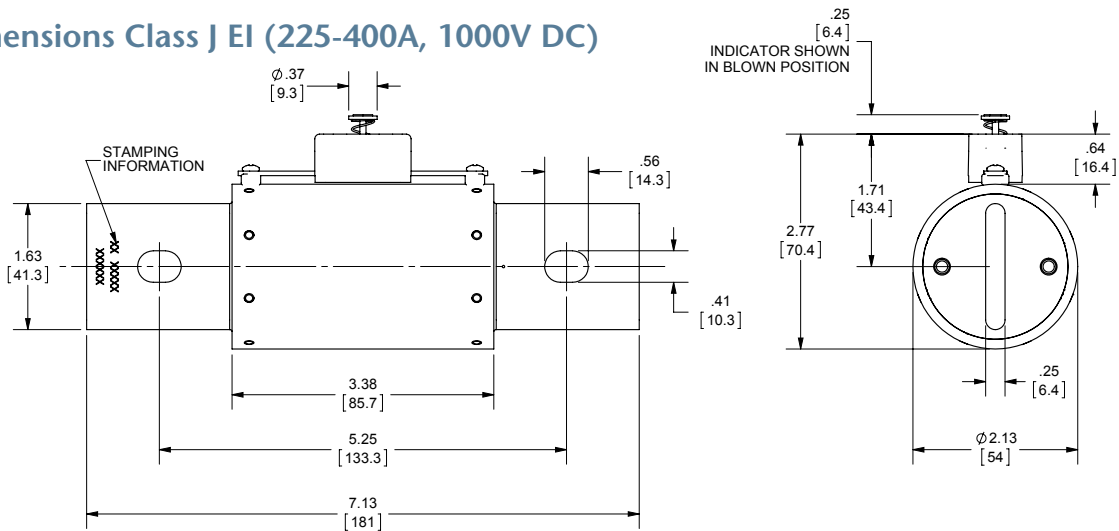
\* Enlarged mounting holes designed to accept 5/16" DIA bolt sizes.

# HP10J 1000V DC Class J Photovoltaic Fuses

## Dimensions Class J (225-600A, 1000V DC)



## Dimensions Class J EI (225-400A, 1000V DC)



## Dimensions Class J (450-600A, 1000V DC)

